

# Geo Final Exam PP 2

1)  $a=4, b=13, c=7, d=17, e=6$

2)  $\sin A = \frac{3}{5}$     $\cos A = \frac{4}{5}$     $\tan A = \frac{3}{4}$

$\sin A \approx 0.52$     $\cos A \approx 0.85$     $\tan A = 0.61$

3)  $15.4 \text{ m}^2$     $304 \text{ m}^2$

4)  $(12, -2)$     $(-17, -46)$

5)  $x, y = 2\sqrt{3}$     $y = 4\sqrt{3}$     $x = 8\sqrt{3}$

6)  $40^\circ$     $110^\circ$

7)  $x = 6.2$     $CA = 7.3$     $AB = 11.6$

8)  $36 - 9\pi \approx 7.74$

9)  $48 \text{ u}^2$     $5\sqrt{299} \text{ u}^2$

10)  $25\sqrt{3} \text{ u}^2$     $9\sqrt{3} \text{ u}^2$

11)  $\frac{1}{2} \pi (15)^2 - \frac{18 \cdot 24}{2} \approx 137.3 \text{ u}^2$

12)  $234^\circ$     $306^\circ$

13)  $24\pi \text{ ft}^{\cancel{3}}$     $\frac{77\pi}{4} \text{ ft}^{\cancel{3}}$

14)  $7.5\pi \text{ m}^2$

$114\pi \text{ ft}^2$

15)  $64\pi \text{ in}^2$

$100\pi \text{ cm}^2$

16) ASA

ASA

SSS

17) GE, FG, FE

LM, LN, NM

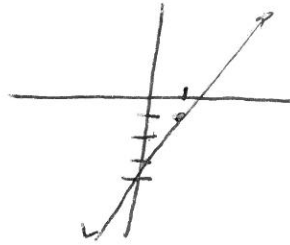
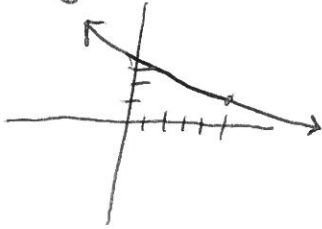
18) Obtuse

Right

Acute

19)  $m = -\frac{2}{5}$   $b = (0, 3)$

$m = 3$   $b = (0, -4)$



20) 78.4

73.4

21)  $J < K < L$

$V < U < T$

22)  $23 \text{ in}^2$

$54 \text{ ft}^2$

23)  $y - 2 = -2(x - 2)$

$y - 3 = -\frac{1}{3}(x + 10)$

$y - 10 = -2(x + 2)$

$y + 3 = -\frac{1}{3}(x - 8)$

24)  $x = 28$

$x = 7$