

Name: _____

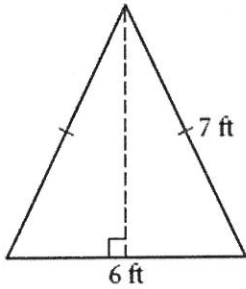
Date: _____

9.4 Practice Problems

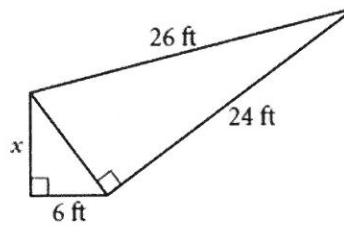
1) Simplify $(2\sqrt{3})^2$.

2) Do the sides $2\sqrt{15}$, $2\sqrt{3}$, $4\sqrt{3}$ make a right, acute or obtuse triangle?

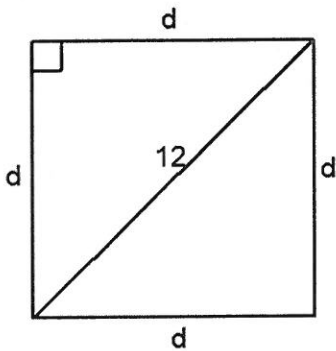
3) Find the height of the triangle below.



4) Solve for x.

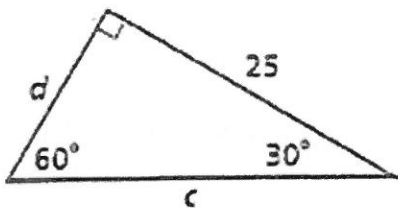


5) Solve for d.



6) Simplify $(4\sqrt{5})(3\sqrt{4})$.

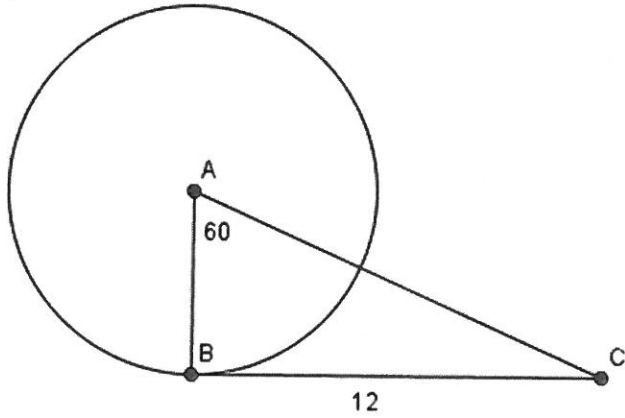
7) Solve for d and c.



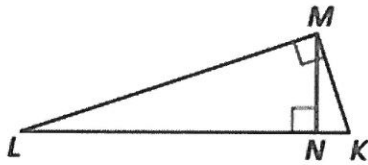
8) Simplify $\sqrt{20} + 3\sqrt{45} - \sqrt{5}$.

9) Given the sides of a triangle being $8\sqrt{2}$, 4 and 12 decide whether the triangle is right, acute or obtuse?

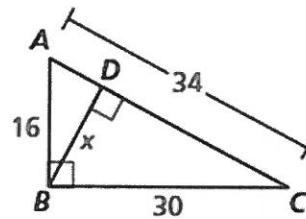
10) Find the length of the radius of circle A.



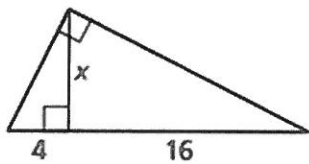
11) Find three similar triangles.



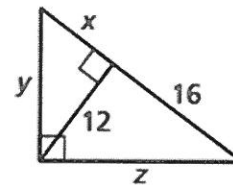
12) Find x.



13) Find x.



14) Find x, y and z.



15) Find the geometric mean of 14 and 20.

16) Find the geometric mean of 24 and 45