

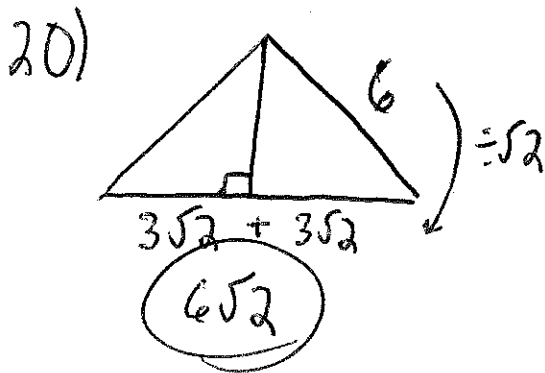
# 9.3 Practice Problems AK.

	1	2	3	4	5	6	7	8	
a	3	5	$6\sqrt{2}$	$\frac{1}{2}$	$8\sqrt{3}$	$5\sqrt{3}$	$6\sqrt{2}$	$9\frac{\sqrt{3}}{2}$	
b	3	5	$6\sqrt{2}$	$\frac{1}{2}$	$8\sqrt{3}$	$5\sqrt{3}$	$6\sqrt{2}$	$9\frac{\sqrt{2}}{2}$	
c	$3\sqrt{2}$	$5\sqrt{2}$	12	$\frac{\sqrt{2}}{2}$	$8\sqrt{6}$	$5\sqrt{6}$	12	9	
	9	10	11	12	13	14	15	16	
a	10	12	5	$6\sqrt{2}$	$\frac{12}{\sqrt{3}} = 4\sqrt{3}$	$\frac{7\sqrt{3}}{2}$	$5\sqrt{3}$	$\sqrt{2}$	
b	$10\sqrt{3}$	$12\sqrt{3}$	$5\sqrt{3}$	$6\sqrt{6}$	12	$\frac{21}{2}$	15	$\sqrt{6}$	
c	20	24	10	$12\sqrt{2}$	$8\sqrt{3}$	$7\sqrt{3}$	$10\sqrt{3}$	$2\sqrt{2}$	

17)  $\frac{12\sqrt{2}}{\sqrt{2}} = 12$

18)  $8\sqrt{3} \div \sqrt{3} = 8$   
 $8 \cdot 2 = 16$

19)  $\frac{10}{\sqrt{2}} = 5\sqrt{2}$



21)  $4 \cdot 5\sqrt{3}$

22)  $5\sqrt{2} \times 2 = 10\sqrt{2}$   
 $X = \frac{10\sqrt{2}}{\sqrt{2}} = 10$

23) Short Leg = 10  
 $Y = 10\sqrt{3}$   
 $X = 20$

24)  $X = 4\sqrt{2}$   
 $Y = 8$

25)  $Y = 6\sqrt{3} + 3$   $X = 12\sqrt{3}$

